



VENEZIA BASSO

Versatility and use





TECHNICAL FEATURES

VENEZIA BASSO



Standard RAL Colours

1015	1021	2011
3002	3020	5005
5012	6018	7035
7037	9006	9010

Standard Features:

- Fan assisted cooling with termostatic valve
- Single top lighting T8
- Valve R404 to solder
- 2-3 shelves painted with price holder
- Terminal board
- Front bumper ABS

Optional Features:

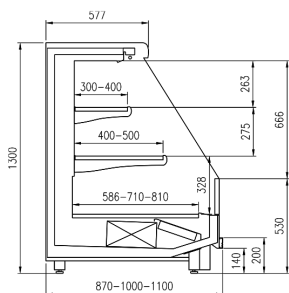
- Stainless Steel front bumper
- White painted divider base grid
- Plasticized grid divider for shelf
- Top double lighting
- Top and ord shelf lighting led or T5
- Control board master and slave
- special RAL painting top or bottom and internal body
- EC fans
- Electronic valve
- Sliding doors
- couple of sidewalls blind, with mirror or panoramic

VENEZIA BASSO

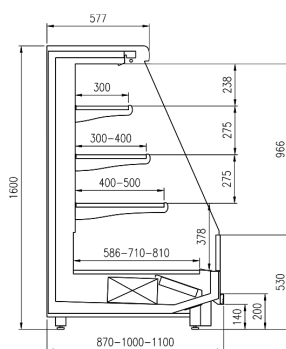
	1250	1875	2500	3750
VENEZIA BASSO P100-M1	•	•	•	•
VENEZIA BASSO P100-M2	•	•	•	•
VENEZIA BASSO P110-M1	•	•	•	•
VENEZIA BASSO P110-M2	•	•	•	•
VENEZIA BASSO P87-M1	•	•	•	•
VENEZIA BASSO P87-M2	•	•	•	•

CROSS SECTIONS

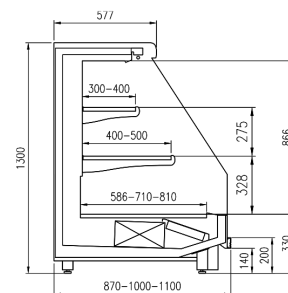
VENEZIA BASSO



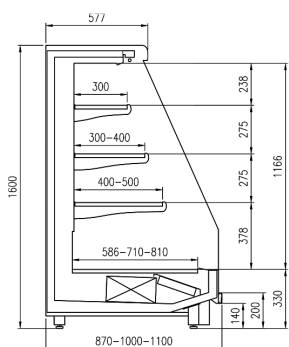
VENEZIA H130 M1



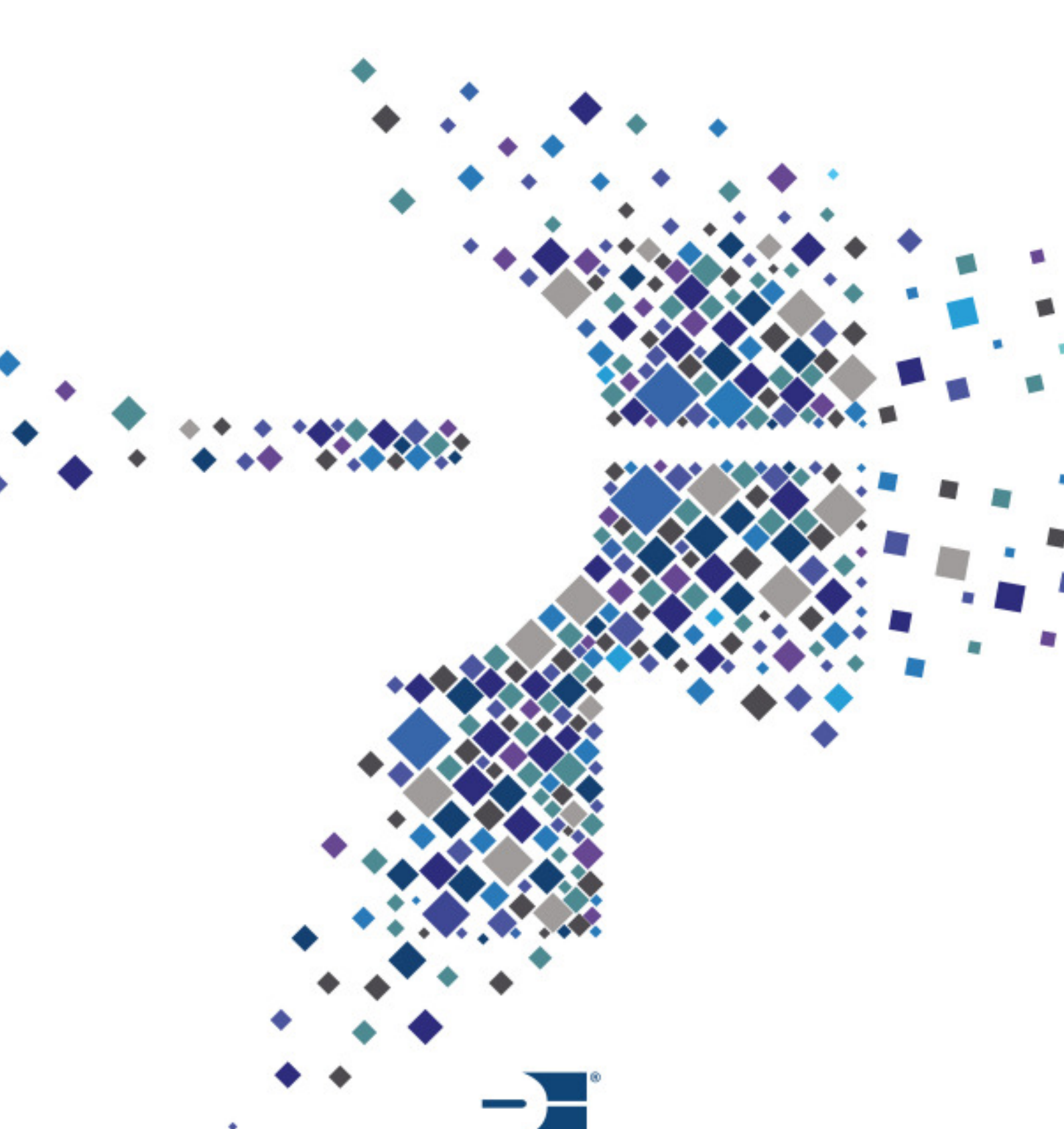
VENEZIA H160 M1



VENEZIA H130 M2



VENEZIA H160 M2



pastorfrigor
Italian Cold Style 

Pastorfrigor Spa
15030 Terruggia (AL) - Italy - Reg. Gabannone. 4 Z.I.
Tel. +39 0142.433.711 - Fax +39 0142.433.701
info@pastorfrigor.it - www.pastorfrigor.it
P.IVA 00578270068

Le immagini e le caratteristiche dei prodotti contenute in questo catalogo non tengono conto di eventuali modifiche o aggiornamenti e le configurazioni proposte non sono vincolanti. Ogni riproduzione è vietata.
Las imágenes y las características de los productos contenidos en este catálogo no tienen en cuenta posibles modificaciones o actualizaciones y las configuraciones propuestas no son vinculantes.
Queda prohibida la reproducción total o parcial. Les images et les caractéristiques des produits mentionnées dans ce catalogue ne tiennent pas compte des modifications ou des mises à jour et les configurations proposées ne sont pas contraignantes. Toute reproduction est interdite.